

Ihr Vertriebspartner:

HY-LINE

hy-line.de
LEADER IN TECHNOLOGY.

HY-LINE Power Components
Vertriebs GmbH
Inselkammerstr. 10
D-82008 Unterhaching
☎ +49 89/ 814 503 -10
power@hy-line.de

HY-LINE AG

Hochstrasse 355
CH-8200 Schaffhausen
☎ +41 52 647 42 00
info@hy-line.ch

powersystem TECHNOLOGY

HIGH DENSITY POWER SUPPLY

AC-DC • DC-DC • DC-AC

PRODUCT BROCHURE

2022-2023

POWER SUPPLY

DESIGNING & MANUFACTURING

OUR STRENGTH



QUALITY

- › CE
- › EN 9100
- › ISO 9001
- › ISO 14001
- › ISO 45001
- › RoHS compliant
- › REACH compliant



KNOW-HOW

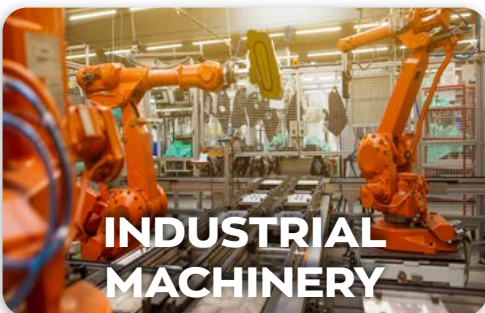
- › PCB layout
- › 3D modelisation
- › Software development
- › Functional test, burn-in
- › EMC & standards qualification
- › Schematic capture & simulation



TEST

- › Functional testing
- › MIL-STD compliance
- › Serial numbered report
- › EMI in-house prequalification

MANY APPLICATIONS



PRODUCTS

CONFIGURABLE

powerPAC4K AC-DC | up to 4000W | 1 to 16 outputs

RENEWABLE ENERGY

INDUSTRIAL



- input ranges:
85-265Vac, 47-63Hz
or 85-135Vac, 360-440Hz
- 1 to 16 outputs from 3V3 to 48 Vdc
- 86 x 153.5 x 305 mm

OPTION:

- ▶ -M: Ruggedization

[DATASHEET](#)



- 98 % Efficiency
- 1.2 Mhz apparent switching frequency
- Very low EMI



- 3V3-48 Vdc up to 500W
- Scalable power
- >93% efficiency
- Low profile 18.5mm



- 200W one slot - single output
- 2x100W one slot - dual outputs
- >93% efficiency
- Low noise soft switching

CONDUCTION COOLED

PST14X

DC-DC | 320W | 1 output

RENEWABLE ENERGY

INDUSTRIAL

DEFENCE

RAILWAY



[DATASHEET](#)

- input ranges: 9-50, 18-36, 16-50 Vdc IN
- 1 output: from 3V3 to 48Vdc
- Parallel and series operation up to few kW
- 160 x 50 x 25mm
- -40°C to 100°C baseplate
- EMI filtered

OPTION:

- ▶ - MV option (MIL-STD-704 and MIL-STD-1275)

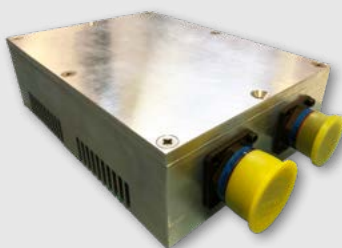


» Integration & custom design with PST14X «



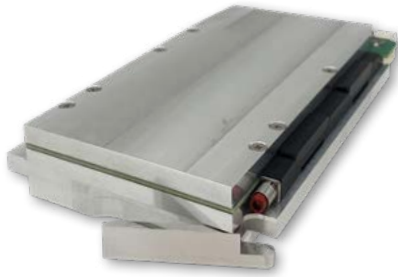
- Input range: 16-50Vdc
- Output: 26Vdc
- Power: 640W

- ▶ Two PST14X units in parallel



- Input ranges: 16-50Vdc
- Output: 28Vdc
- Power: 640W
- 140 x 218 x 55 mm

- ▶ Two PST14X units in parallel
- ▶ Custom IP65 box



- input range: 16-50Vdc
- 6 outputs:
 - 3V3(20A),
 - 5V(20A),
 - 12V(50A),
 - 3V3aux(3A),
 - 12Vaux(1.5A),
 - 12Vaux(1.5A)
- 3U x 5TE x 160 mm
- -40°C to 85°C



INCLUDED FEATURES:

- Ruggedization
- 40°C to 85°C
- Conformal coating
- PMBus for monitoring signals
- Compliant VITA62



[DATASHEET](#)

OPTION:

- ▶ -H: Heatsink

» Rack and backplane available as accessories «



PST14 family

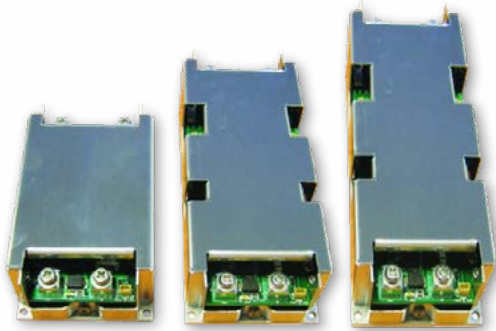
DC-DC | up to 500W | 1 output

INDUSTRIAL

DEFENCE

RAILWAY

VEHICLE



- input ranges: 12, 24, 48, 72, 110 Vdc IN
- 1 output from 3V3 to 48 Vdc
- Several outputs, parallel or series operations up to several kW

[DATASHEET](#)

OPTIONS:

- ▶ -H: Heatsink
- ▶ -MTV: MIL STD 1275A
-40°C
Conformal coating



PST14A

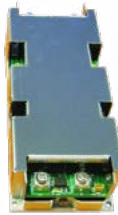


500W

225 x 61 x 35 mm

[DATASHEET](#)

PST14B



250W

140 x 61 x 35 mm

[DATASHEET](#)

PST14C



150W

100 x 61 x 35 mm

[DATASHEET](#)

» Integration & custom design with PST14 «



- Input range: 18-36Vdc
- Output: 28V / 1000W
- 155 x 275 x 48 mm

- ▶ Two PST14A units
- ▶ Hermetic connectors
- ▶ IP65 package



- Input range: 36-75Vdc
- Output: 80V / 750W
- 163 x 184 x 62 mm

- ▶ Three PST14B

PST21 family

AC-DC | up to 1200W | 1 to 6 outputs | very low profil

RENEWABLE ENERGY

INDUSTRIAL

DEFENCE

AVIONIC



- input range: 85-265Vac
- 1 to 6 outputs from 3V3 to 48 Vdc

OPTIONS:

- ▶ -H: Heatsink
- ▶ -MTV: Defence
-40°C
Conformal coating

DATASHEETS

PST21A



1200W

1 to 6 outputs : 3V3 to 48Vdc
255 x 127 x 40 mm

PST21B



600W

1 to 3 outputs : 3V3 to 48Vdc
200 x 127 x 40 mm

PST21C



300W

1 to 2 outputs : 3V3 to 48Vdc
200 x 80 x 40 mm

PST21D



150W

1 output : 3V3 to 48Vdc
165 x 61 x 35 mm

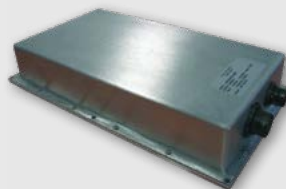


» Integration & custom design with PST21 «



- Input: 115Vac 60Hz
- Output: 28V / 780W max.
- 470 x 160 x 100mm
- -25°C to 50°C ambient temperature

- ▶ One standard PST21A
- ▶ Custom IP56 box



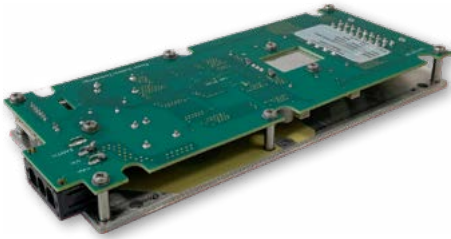
- Input: 85-264Vac 47-63Hz
- Output: 28V / 600W
- 155 x 275 x 45mm

- ▶ Hermetic connectors
- ▶ IP65 package

PST27X

DC-DC | 320W | 1 output

INDUSTRIAL
DEFENCE
AVIONIC



- input ranges: 9-50Vdc, 18-36Vdc, 16-50Vdc
- 1 output: 3V3 to 48Vdc
- 80 x 190 x 21 mm
- -40°C to 90°C baseplate

DATASHEET



OPTIONS:

- ▶ -H: Heatsink
- ▶ -MV: Ruggedization and conformal coating

EUROCARD

CPCI AC

AC-DC | compact PCI 300W | 4 outputs

INDUSTRIAL
DEFENCE
AVIONIC



- input ranges: 85-265 Vac or 100-350 Vdc IN
- 4 outputs: 3V3/50A, 5V/40A, 12V/1A, -12V/1A
or 3V3/50A, 5V/40A, 12V/5A, -12V/1A
- 3U x 8TE x 160 mm

DATASHEET



OPTIONS:

- ▶ -MTV: MIL-STD ruggedized
-40°C
Conformal coating
- ▶ -Y: 61000-4-5

PST26

AC-DC | up to 300W | 1 to 3 outputs

INDUSTRIAL
DEFENCE



- input ranges: 85-265Vac or 120-350Vdc
- 1 to 3 outputs from 3V3 to 48 Vdc
- 3U x 8TE x 160 mm

DATASHEET



OPTIONS:

- ▶ -F: Without front panel
- ▶ -T: -40°C
- ▶ -V: Conformal coating

Ihr Vertriebspartner:

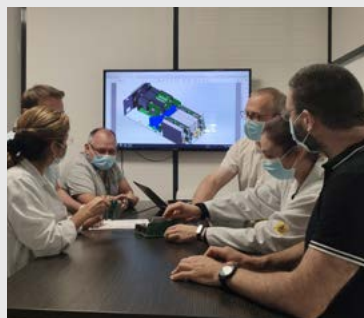
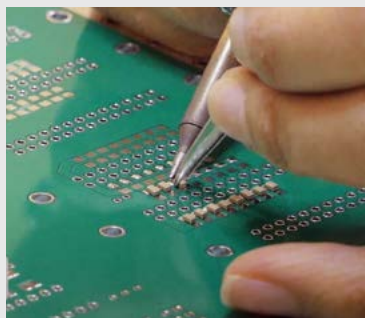


HY-LINE Power Components
Vertriebs GmbH
Inselkammerstr. 10
D-82008 Unterhaching
☎ +49 89/ 514 503 -10
power@hy-line.de

HY-LINE AG
Hochstrasse 355
CH-8200 Schaffhausen
☎ +41 52 647 42 00
info@hy-line.ch

CUSTOM DESIGN & SUBCONTRACTING

In our production plant we can **design**, **layout**, **manufacture** and **assembly** any electronic board or equipment with ROHS or lead soldering, SMT pick and place machine, IPC 610 control. Our approach reduces design cycle, size and bridges in the gap between **custom** and **off-the-shelf power supplies** !



REFERENCES



Indra



ALSTOM



KONGSBERG



THALES



AND MANY MORE!



ZA la Paillerie
61340 Berd'huis, France



+33 2 33 83 94 94



sales@powersystemtechnology.com