

BR-400AN

Easily Construct Wireless Mesh Network with Enterprise Security



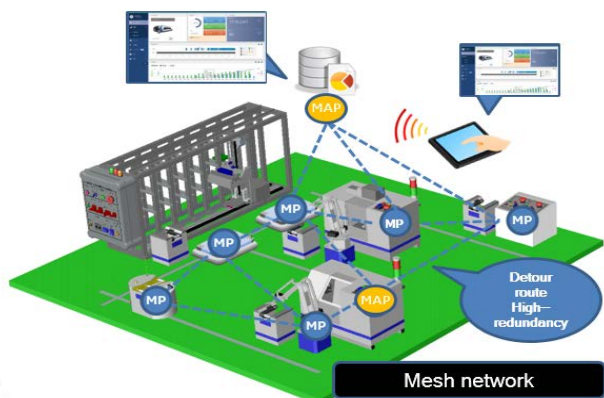
Supports Infrastructure and Peer to Peer Multiconnect Mode

The BR-400AN is a mesh network system that allows the user to easily construct a wireless LAN in a place where there is no network. It supports IEEE802.11s mesh network. This 802.11a/b/g/n mesh WLAN converter automatically establishes a wireless LAN between devices. With this bridge, users can set up wireless LAN environment in offices, health care sites and plants where IoT and ICT are actively involved in transfer of data.

The BR-400AN can transmit data at 130Mbps with just 7ms round-trip timing. It supports IEEE802.1X authentication to guarantee enterprise-level security in office and business networks. It supports industry leading standards for authentication and encryption including WPA, WPA2, and most commonly used EAP types.

Mesh Technology

BR-400AN supports IEEE802.11s making it easier to construct a mesh network at a low cost compared with the traditional mechanism. The mesh network automatically reconfigures the communication route according to the installation environment. Approx 1 sec of network configuration time, mesh proves effective in transmitting data in factory and office environment.



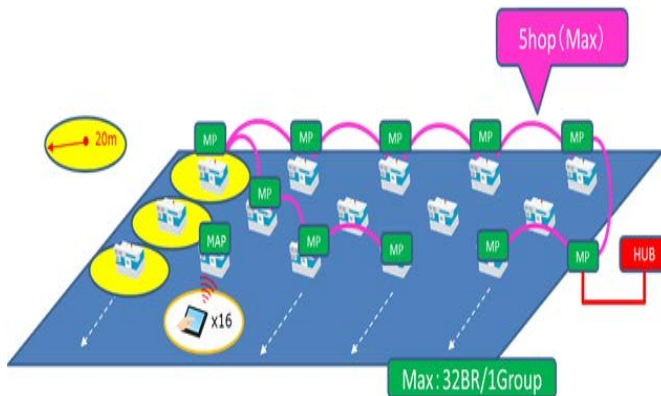
Network Redundancy & loop detection

BR-400AN supports the RSTP (Rapid Spanning Tree Protocol). AMC Mesh network can suppress loop network, and it enables fast convergence. Automatic recovery time up to 6 sec, when backbone is down.

It also helps in easy area expansion with backup just by placing the bridge where they are needed. It does not require AP but can horizontally expand the area.

Multi-hop Support

Up to 32 units constitutes to make one mesh network group, with the maximum of 5 hops. Data is transmitted farthest by overlapping hops, connecting data with multiple stages and multiple routes.

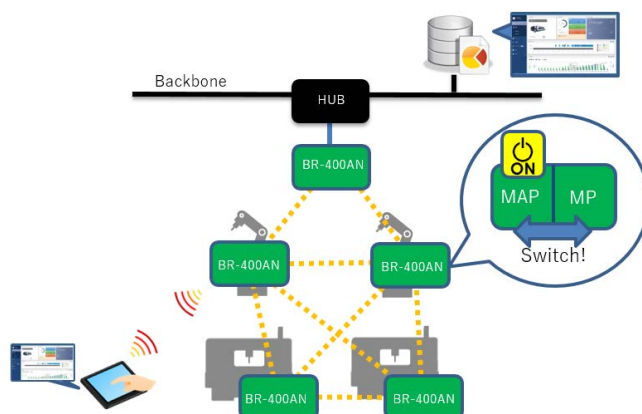


Mesh Point Mode & Mesh Access Point Mode

Two modes of operation are available in BR-400AN depending on the application environment:

Mesh Point Mode is when a bridge is connected to another bridge. Up to 8 units can be connected.

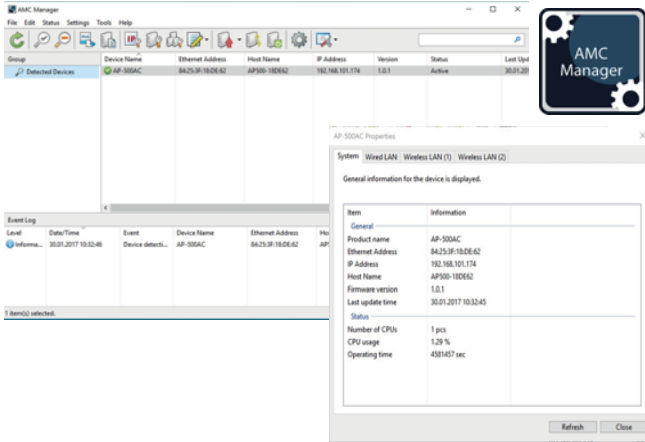
Mesh Access Point Mode is when a device is connected to a bridge to access. Up to 16 units can be connected



AMC Manager Support

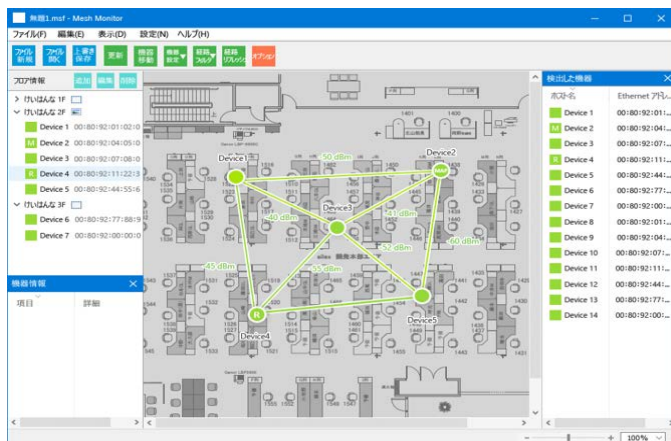
The BR-400AN wireless bridge is compatible with the optional device management software "AMC Manager".

With this software, network administrators can execute the functions required for device management of Silex networking products from one point, for example monitor device status, configuration settings, update firmware, automatically record device operating logs and restart the devices.



Mesh Monitor (AMC Manager® plug-in)

Mesh Monitor is AMC Manager® plug-in option to visualize mesh network composed of BR-400AN. This application aids the user with setup and operation management. User can map BR-400AN and check communication path, connection link status between terminals, radio field strength at a glance.



Enterprise security

BR-400AN supports enterprise-class security which makes it ideal for business networks.

- IEEE 802.1X authentication compliant
- Access point SSID Stealth compatible
- MAC address filtering function
- AES encryption

Specifications

Product name	BR-400AN
LAN	
Interface	RJ-45 x 1 Port
Standard	10BASE-T/100BASE-TX/1000BASE-T
WLAN	
Standard	IEEE 802.11a/b/g/n
Security	WAP (64/128 bit) WPA/WPA2-PSK (TKIP-AES) WPA2-PSK(AES) 802.1x (EAP-TLS/EAP-TTLS/PEAP) SSID Stealth MAC address filter SAE(AES)
Channels	2.4GHz : 1 13ch 5GHz : 36 64ch, 100 140ch
Setup	Push button
Others	
Storage Condition	Temperature: -10 to 50 °C Humidity: 20 to 90% RH (no condensation)
Operating Condition	Temperature: 0 to 40 °C Humidity: 20 to 80% RH (no condensation)
Power	7 W (DC 5 V 1.4 A)
Dimension	100 mm x 100 mm x 25.5 mm
Weight	148g
Supplied Items	Main body, AC adapter, LAN cable, Setup guide, GPL notice sheet, warranty card
Acquisition standards	VCCI RoHS compliant
Device Mode	Mesh Point Mesh Access Point
Supported Browser	Internet Explorer 8 or later Safari 4.0.0 or later

silex technology is a registered trademark of silex technology, Inc. Other product or brand names may be registered trademarks or trademarks of their respective owners. Technical information and specifications are subject to change without notice. © 2018 silex technology, Inc. All rights reserved.

silex global sales & support locations



US Office
silex technology america, Inc.
 +1-801-748-1199
 US toll free 866-765-8761
 www.silexamerica.com
 sales@silexamerica.com

Europe Office
silex technology europe, GmbH
 +49-2151-65009-10
 Germany toll free 0800-7453938
 www.silexeurope.com
 contact@silexeurope.com

India Office
silex technology india, Pvt. Ltd.,
 +91-44-43033234
 www.silex-india.com
 support@silex-india.com

Corporate Headquarters
silex technology, Inc.
 +81-774-98-3781
 www.silex.jp
 support@silex.jp