

Revolutionary 10Mhz Power Inductor Technology

The new Cooper Bussmann® Coiltronics® MPI Series of Miniature Power Inductors take performance and application flexibility to New Levels in a small package

Break-Through Technology

- Distributed gap core material and construction provides optimum efficiency and power density with reduced losses over -40 to 125°C operating range.
- Composite core structure completely encloses flux lines for “best-in-class” EMI shielding without the gaps found in “shielded” drum inductors and without exposed wires as with toroidal inductors.
- Rugged, flexible construction is highly resistant to shock and vibration.

Greater Performance

- Handles high transient inrush current spikes.
- Provides superior EMI shielding.
- Offers stable inductance performance up to 10MHz
- Substantially lower cost loss than iron powder over the operating temperature range.

Greater Design Versatility

- Smaller size and higher peak power capability delivers the competitive edge.
- Excels in power, high frequency filtering and EMI sensitive applications.
- RoHS compliant, lead-free and halogen-free meets environmental considerations.



Ihr Vertriebspartner:
HY-LINE®
POWER COMPONENTS

Inselkammerstraße 10
D-82008 Unterhaching
Tel.: +49 (0)89 614503 10
Fax: +49 (0)89 614503 20
E-Mail: power@hy-line.de
URL: www.hy-line.de

Gründenstrasse 10
CH-8247 Flurlingen
Tel.: +41 (0)52 647 42 00
Fax: +41 (0)52 647 42 01
E-Mail: power@hy-line.ch
URL: www.hy-line.ch

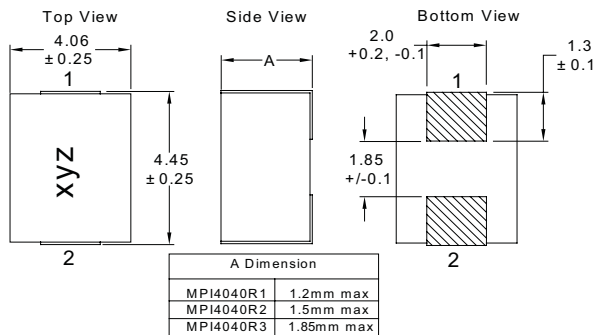
Specifications*

Part Number	OCL ±15%(μH)	Part Marking Designator	I _{rms} (Amps)	I _{sat} (Amps) @25°C	DCR (mΩ) @20°C±15%
R1 Version					
MPI4040R1-R10-R	0.09	A	7.4	32 [†]	8.5
MPI4040R1-R15-R	0.15	B	6.5	26 [†]	11.0
MPI4040R1-R22-R	0.22	C	5.1	21	18.0
MPI4040R1-R33-R	0.33	D	4.08	17	28.0
MPI4040R1-R47-R	0.47	E	3.75	11	35.0
MPI4040R1-R68-R	0.68	F	3.1	9.0	51.0
R2 Version					
MPI4040R2-R47-R	0.47	G	4.3	13	28.0
MPI4040R2-1R0-R	1.0	H	3.8	2.25	38.0
MPI4040R2-1R5-R	1.5	I	2.75	1.8	60.0
MPI4040R2-2R2-R	2.2	J	2.3	1.5	82.0
MPI4040R2-3R3-R	3.3	K	1.96	1.25	113
MPI4040R2-4R7-R	4.7	L	1.6	1.1	175
R3 Version					
MPI4040R3-R22-R	0.22	W	8.0	20	8.0
MPI4040R3-R47-R	0.47	U	5.8	17	12.0
MPI4040R3-1R2-R	1.2	V	4.0	9.4	32.0
MPI4040R3-1R5-R	1.5	M	3.8	8.2	36.0
MPI4040R3-2R2-R	2.2	N	3.4	7.9	48.0
MPI4040R3-3R3-R	3.3	O	3.0	6.6	60.0
MPI4040R3-4R7-R	4.7	P	2.3	4.8	92.0
MPI4040R3-6R8-R	6.8	Q	2.0	4.5	140
MPI4040R3-100-R	10.0	R	1.5	3.8	213
MPI4040R3-150-R	15.0	S	1.3	3.0	285
MPI4040R3-220-R	22.0	T	1.1	2.2	408

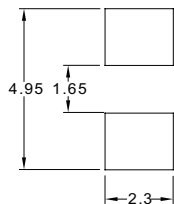
* For details, visit www.cooperbussmann.com/datasheets/elx for Data Sheet 4086.

† Transient pulse not to exceed 1 millisecond.

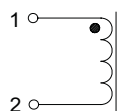
Dimensions - mm



Recommended Pad Layout



Schematic



Applications

- Handheld/Mobile
- Portable Media Players
- GPS Units
- Smartphones
- Notebooks
- Netbooks
- Tablets
- Smartbooks
- Wireless Reading Devices
- LCD Displays
- LED/LCD Drivers
- Wireless Cards



Take a Break from Ordinary Inductors... Ask for a Design Kit

Design Kits are Available to Qualified Engineers

Go to: www.cooperbussmann.com/request/index.cfm and order part number DK01-18740-R.

Parametric Search Engine

Find the Coiltronics inductors that match your design criteria:

- Go to:

www.cooperbussmann.com/powerinductorsearch.aspx



Technical Application Assistance

Contact our applications engineers with your questions:

- E-mail: InductorTech@cooperindustries.com

Online Resources

- Go to: www.cooperbussmann.com/elx for:

- Application notes
- Data sheets
- Ordering product samples

Order samples online - www.cooperbussmann.com/Elx