

Mounting Clip for Cinterion MC55i / MC55 / MC56 modules

GTT Europe P/N : GT-MC55i-CLIP

V1.2 Release 17th November 2008

PCB Mounting Clip Design for Cinterion Wireless Module : MC55i / MC55 / MC56

Web: www.gtteurope.co.uk
 Email: enquiries@gtteurope.co.uk
 Phone: + 44 (0) 1780 758 530

FEATURES AND APPLICATION

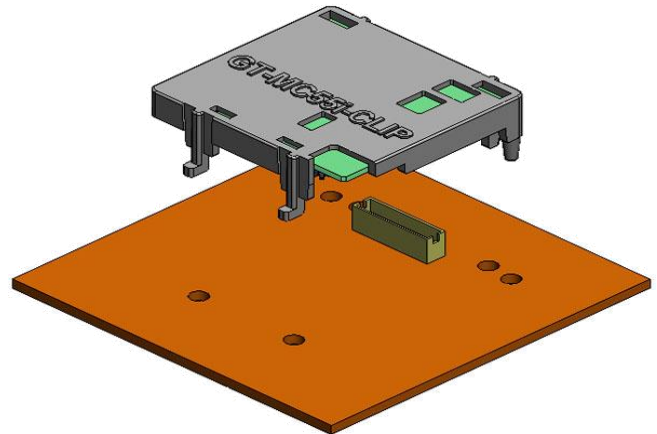
Board to Board connector information

Cinterion module board side header : Hirose DF12C(3.0)-50DS-0.5V(86)
 PCB mating board side receptable : Hirose DF12E(5.0)-50DP-0.5V(86)
 Size : 50 pins
 Stacking height : 5.0mm

PCB mating board thickness : 1.6mm
 Pulling force (Module Clip on PCB) : Minimum 10N
 Maximum 150N

Reference information

Packaging information : 25clips/bag , 1350clips/carton



CLIP SPECIFICATIONS

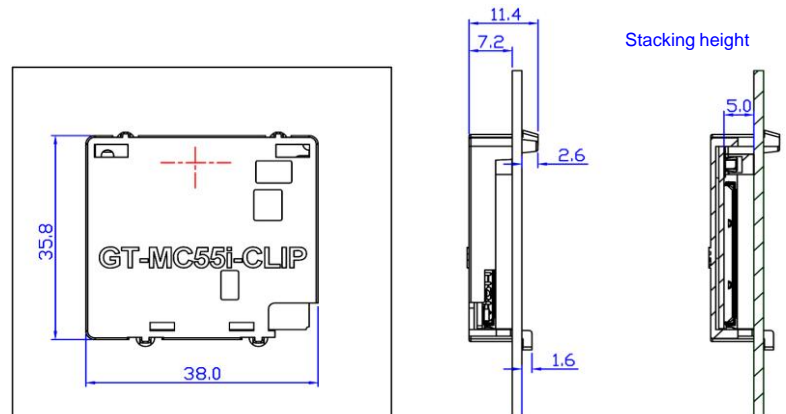
Physical

Clip material :
 - PC-940A (Flame retardant PC ,UL 94V-0)
 - Color : Black
 - RoHS compliant

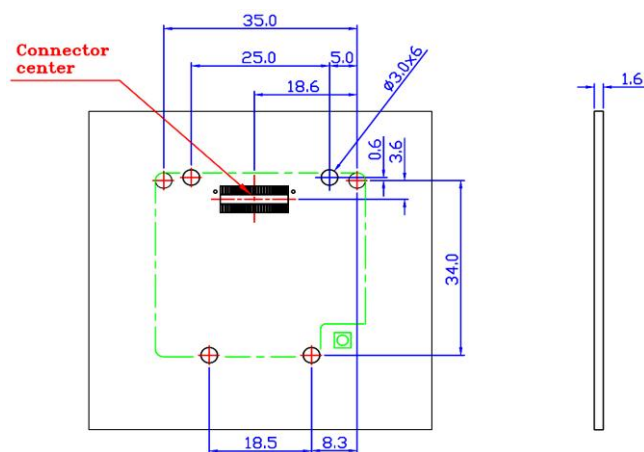
Operating Temperature : -40°C ~ +100°C

Weight : 2.35 g

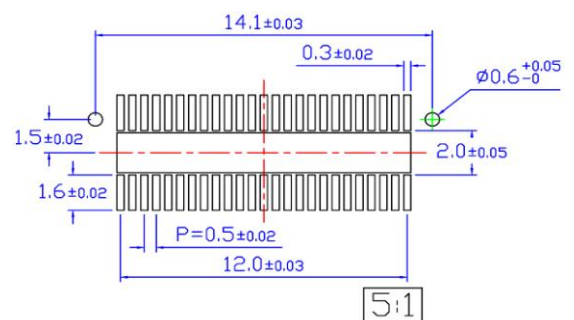
Assembled dimensions (in millimeters)



MODULE CLIP PCB FOOTPRINT AND CONNECTOR RECEPTACLE DIMENSIONS



Module Clip PCB Footprint



PCB Connector Receptacle dimensions

Mounting Clip for Cinterion MC55i / MC55 / MC56 modules

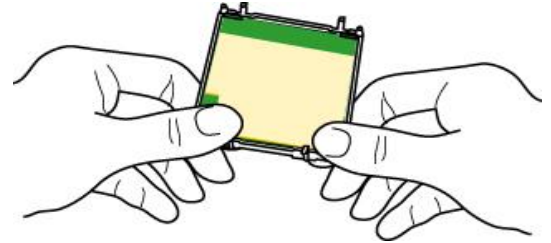
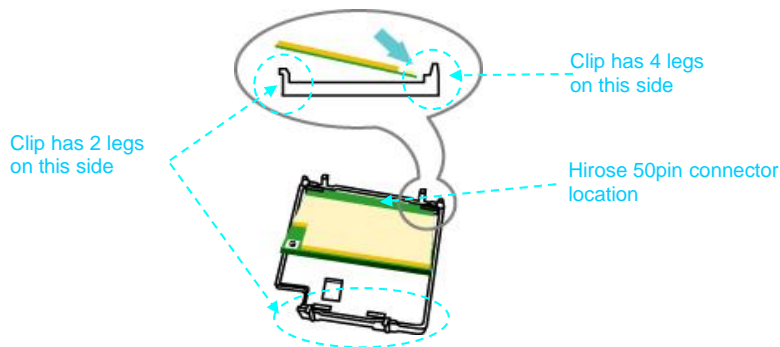
GTT Europe P/N : GT-MC55i-CLIP

V1.2 Release 17th November 2008

PCB Mounting Clip Design for Cinterion Wireless Module : MC55i / MC55 / MC56

Web: www.gtteurope.co.uk
Email: enquiries@gtteurope.co.uk
Phone: + 44 (0) 1780 758 530

MOUNTING INSTRUCTIONS (Module into Clip)



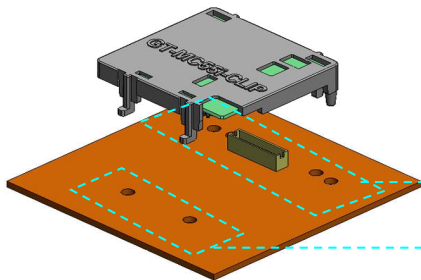
1st STEP :

Orientate the module in the clip as shown : the side with a Hirose 50pin connector is the side which goes into the Clip first .
Insert the Module at an inclined angle , sliding the edge of the PCB underneath the two retaining lugs of the Clip .

2nd STEP :

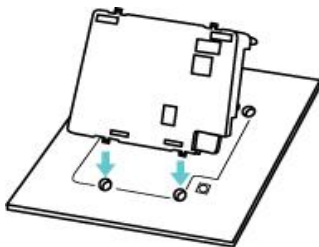
Press the other side of the module vertically downwards to fit it into the Clip .

MOUNTING INSTRUCTIONS (Module+Clip into Circuit Board)



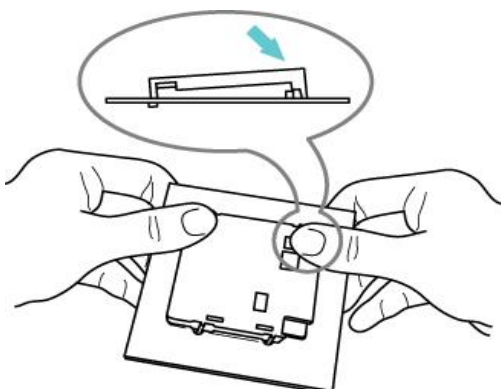
1st STEP :

Orientate the Clip legs with the PCB mounting holes
With 'GT-MC55i-CLIP' characters upright ,
4 holes at the top , near the Hirose receptacle ,
2 holes at the bottom



2nd STEP :

Insert the 2 legs of the Clip first , into the corresponding holes on the PCB footprint .
Be sure to completely insert the 2 legs before beginning the 3rd STEP .



3rd STEP :

While inserting the other 4 legs ,
the Hirose 50pin connector will , at the same time , match into the receptacle on the PCB

Please be sure the direction of the force exerted on the Clip/Module is at a 45° angle downwards (as suggested by the arrow in the schematic) , and not vertically at 90° !